



REGISTRATION OF CHASSIS & BRAKE

Category	BAMBINO
Valid From	20 December 2018
Number of Pages	7

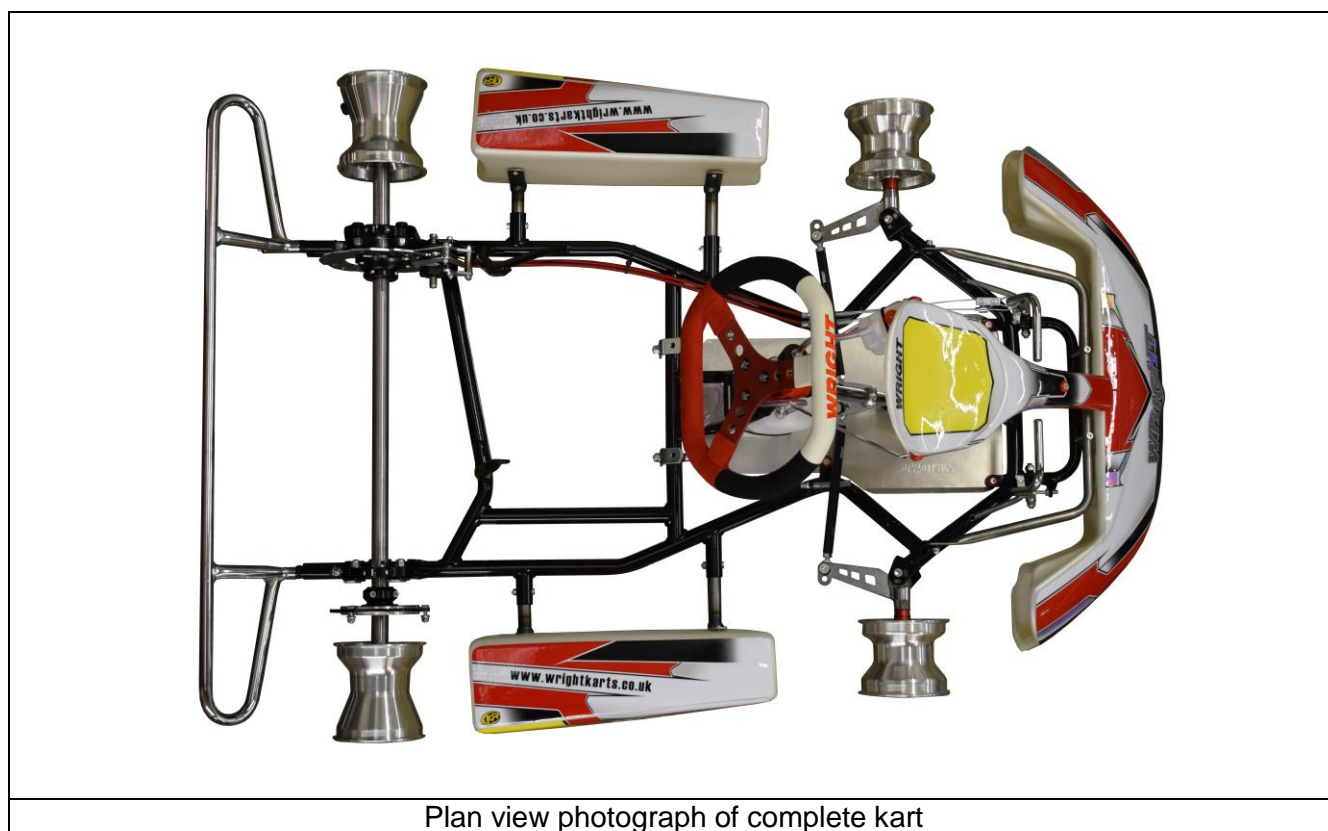
This Homologation Form reproduces descriptions, illustrations and dimensions of the chassis at the moment of the Karting UK homologation. The Manufacturer may modify them, but only within the limits set by the Motorsport UK regulations in force and with the written agreement of Motorsport UK.

Signature and stamp of Motorsport UK

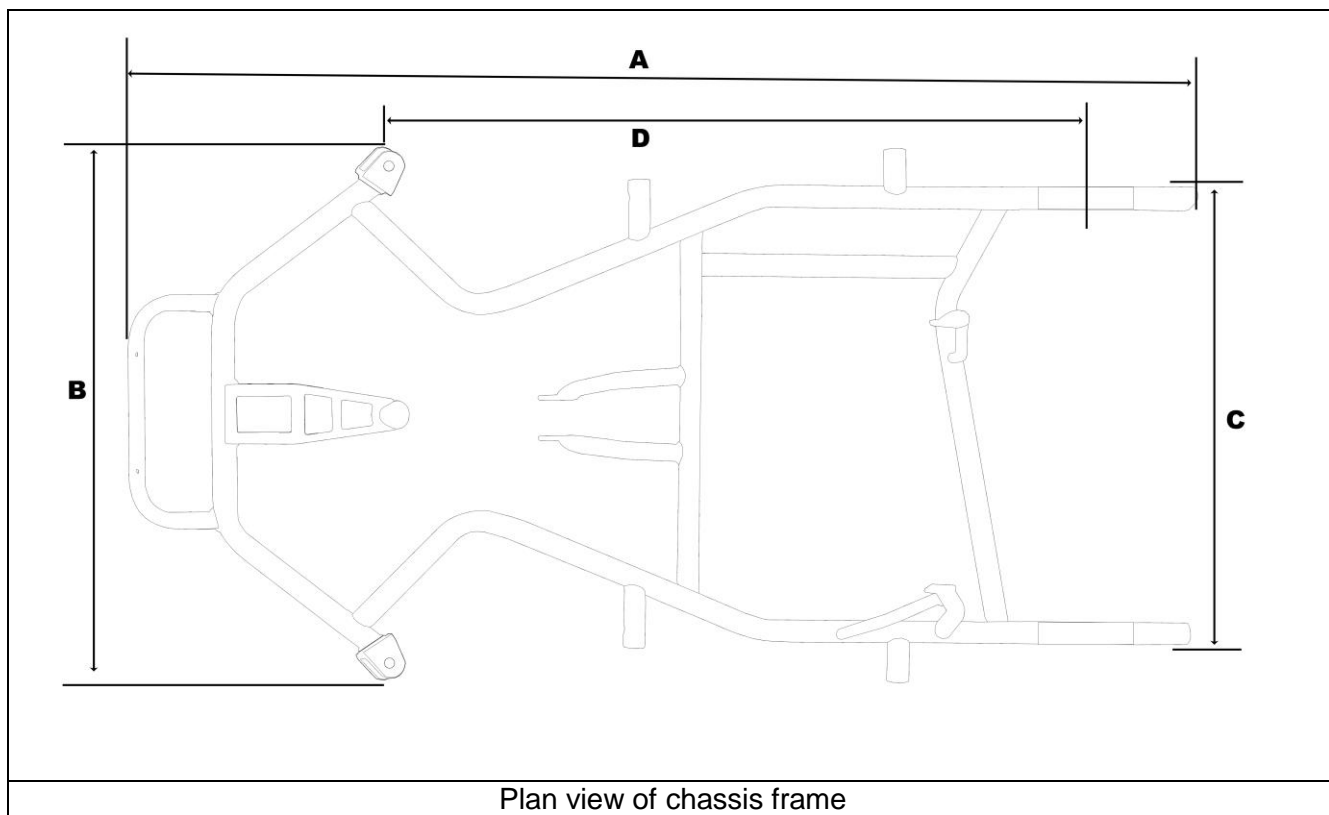
 	Date: 20 December 2018
	Signed by: Joe Hickerton
	Position: Technical Manager

CHASSIS

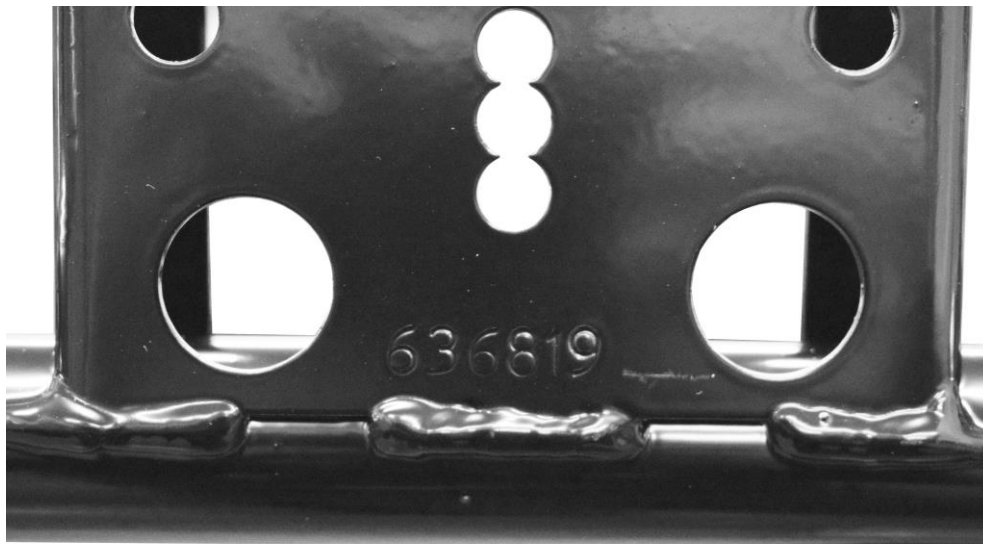
Manufacturer	Simon Wright Racing Developments Ltd.
Make	Wright
Model	Minotaur



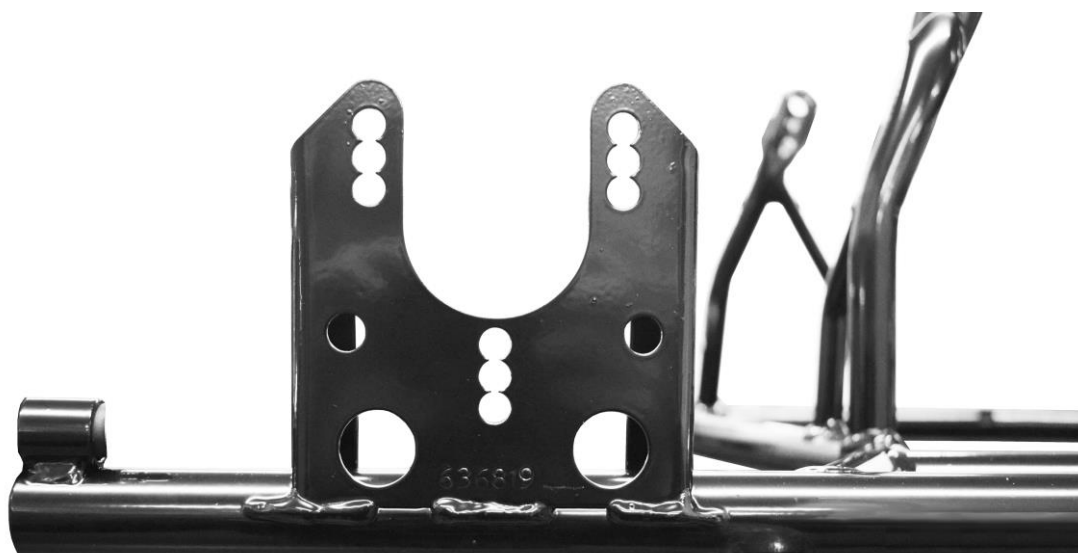
Plan view photograph of complete kart

TECHNICAL DRAWINGS OF FRAME

DETAILS OF IDENTITY PLATE



Photograph of I.D. plate



Photograph/drawing of position of I.D. plate

DIMENSIONS OF FRAME

		<i>Measurement</i>	<i>Tolerance</i>
A:	Total Length	1195 mm	+/- 10mm
B:	Width at Front Axle	590 mm	+/- 10mm
C:	Width at Rear Axle	525 mm	+/- 10mm
D:	Wheelbase	775 mm	+/- 10mm
E:	Number of Bends	7	-
F:	Number of Tubes with Ø over 21mm	6	(max. 6)
G:	Tube Diameter	25.2 mm	+/- 0.3mm
H:	Tube Wall Thickness	2.1 mm	+/- 0.2mm
I:	Tube Material	Steel	mandatory
J:	Number of Bearings	2	mandatory
K:	Outside Ø of Axle	25 mm	+/- 0.2mm
L:	Axle Wall Thickness	5 mm	+/- 0.2mm

COMPLIMENTARY INFORMATION – CHASSIS

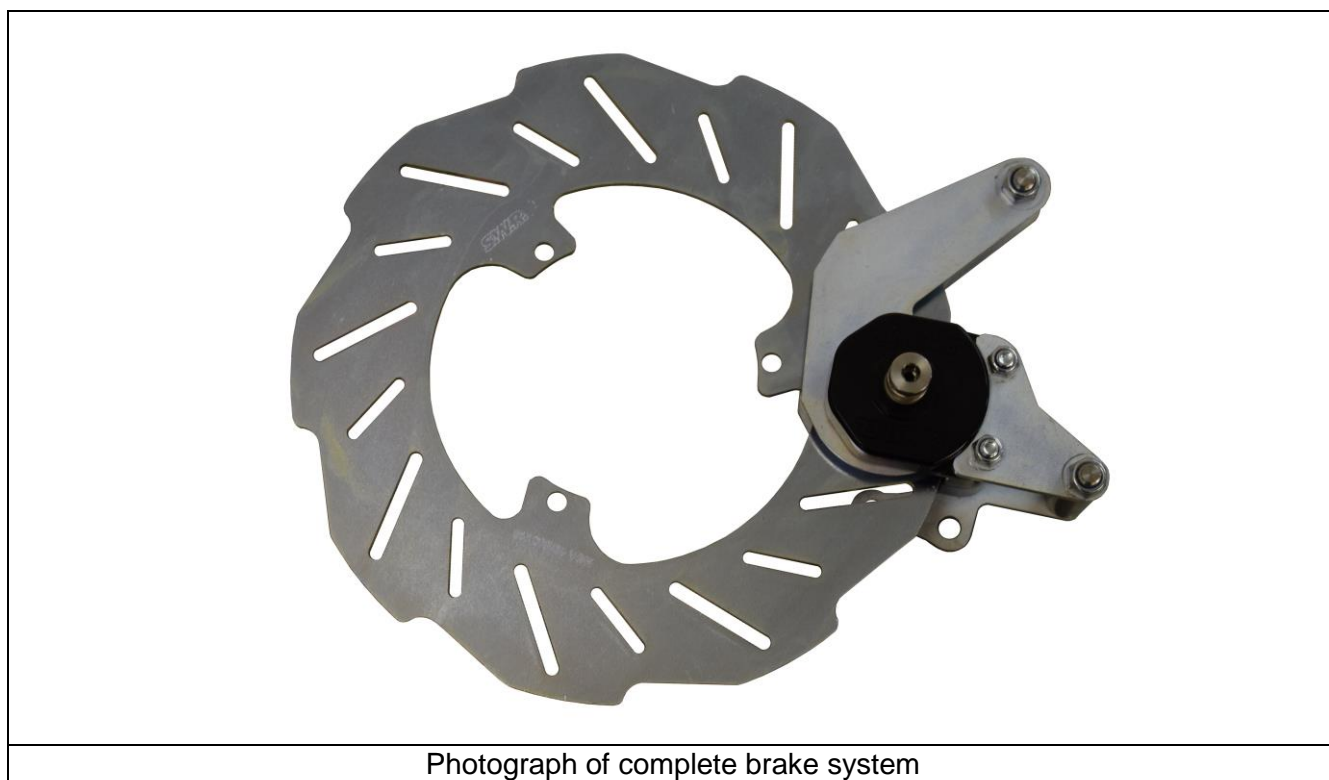
Alternative rear axles:

K:	Outside Ø of Axle	25 mm	+/- 0.2mm
L:	Axle Wall Thickness	Solid	+/- 0.2mm

K:	Outside Ø of Axle	25 mm	+/- 0.2mm
L:	Axle Wall Thickness	3 mm	+/- 0.2mm

BRAKE SYSTEM

Manufacturer	Simon Wright Racing Developments Ltd.
Make	Wright
Model	Minotaur 19

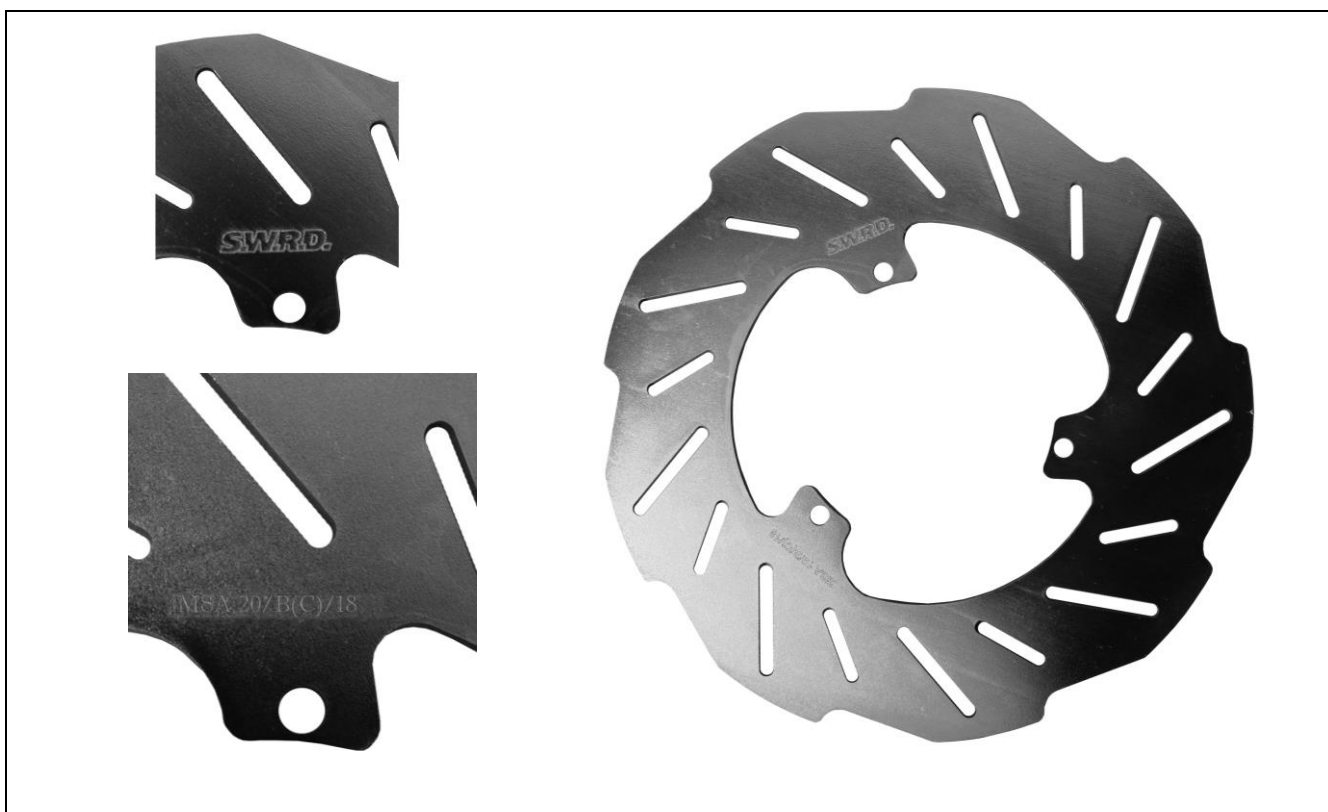


TECHNICAL DETAILS

		<i>Measurement</i>	<i>Tolerance</i>
A:	Actuation	Mechanical	-
B:	Number of Calipers	1	-
C:	Caliper Material	Aluminium	-
D:	Number of Pads	2	<i>per Caliper</i>
E:	Thickness of Disc	3 mm	+/- 1mm
F:	External Ø of Disc	184 mm	+/- 1.5mm
G:	Internal Ø of Disc	74 mm (max.)	+/- 1.5mm
H:	Drilled Disc?	Slotted	-
I:	Grooved Disc?	No	-
J:	Number of Mounting Lugs	3	-
K:	Dual Linkage?	Yes	mandatory



Photograph of brake caliper



Photograph of brake disc

COMPLIMENTARY INFORMATION – BRAKE

Insert any additional information that may be required here