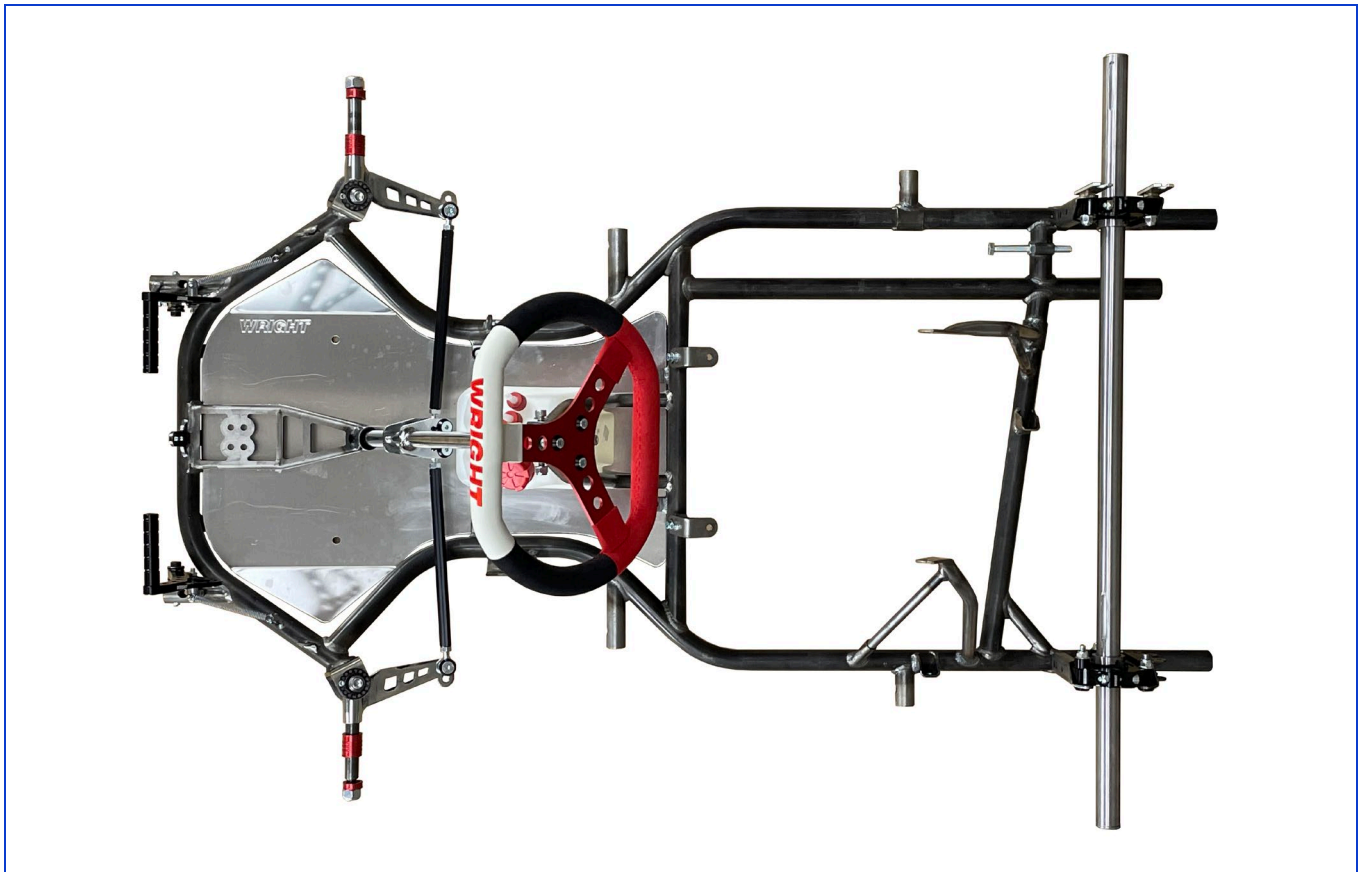


## Kart Chassis Homologation – Inter & Cadet

<b>Manufacturer</b>	Simon Wright Racing Developments Ltd
<b>Make</b>	Wright
<b>Model</b>	Hydra

<b>Valid from</b>	01 January 2023	<b>Valid until</b>	31 December 2030
-------------------	-----------------	--------------------	------------------

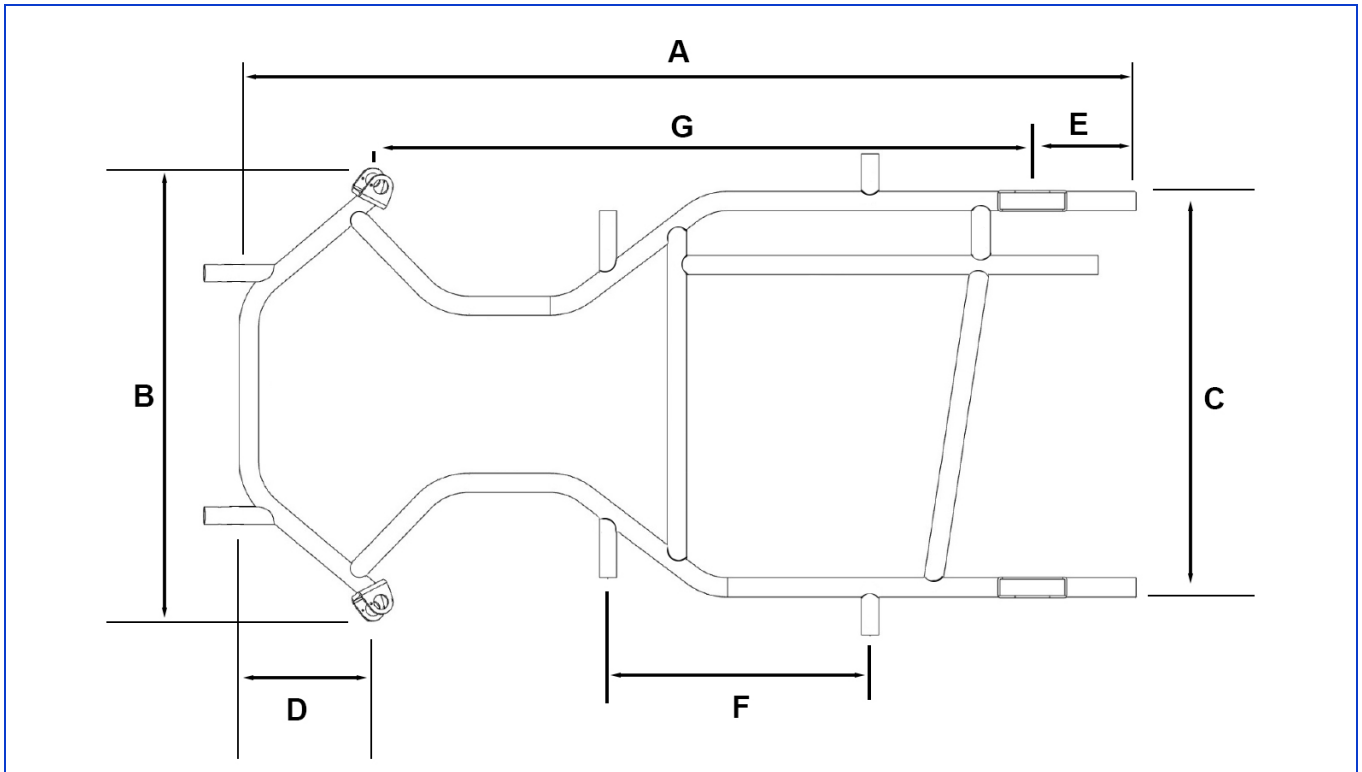
This Homologation Form reproduces descriptions, illustrations and dimensions of the chassis at the point of homologation. The Manufacturer may only modify these within the limits set by the Motorsport UK regulations in force and with the written agreement of Motorsport UK.



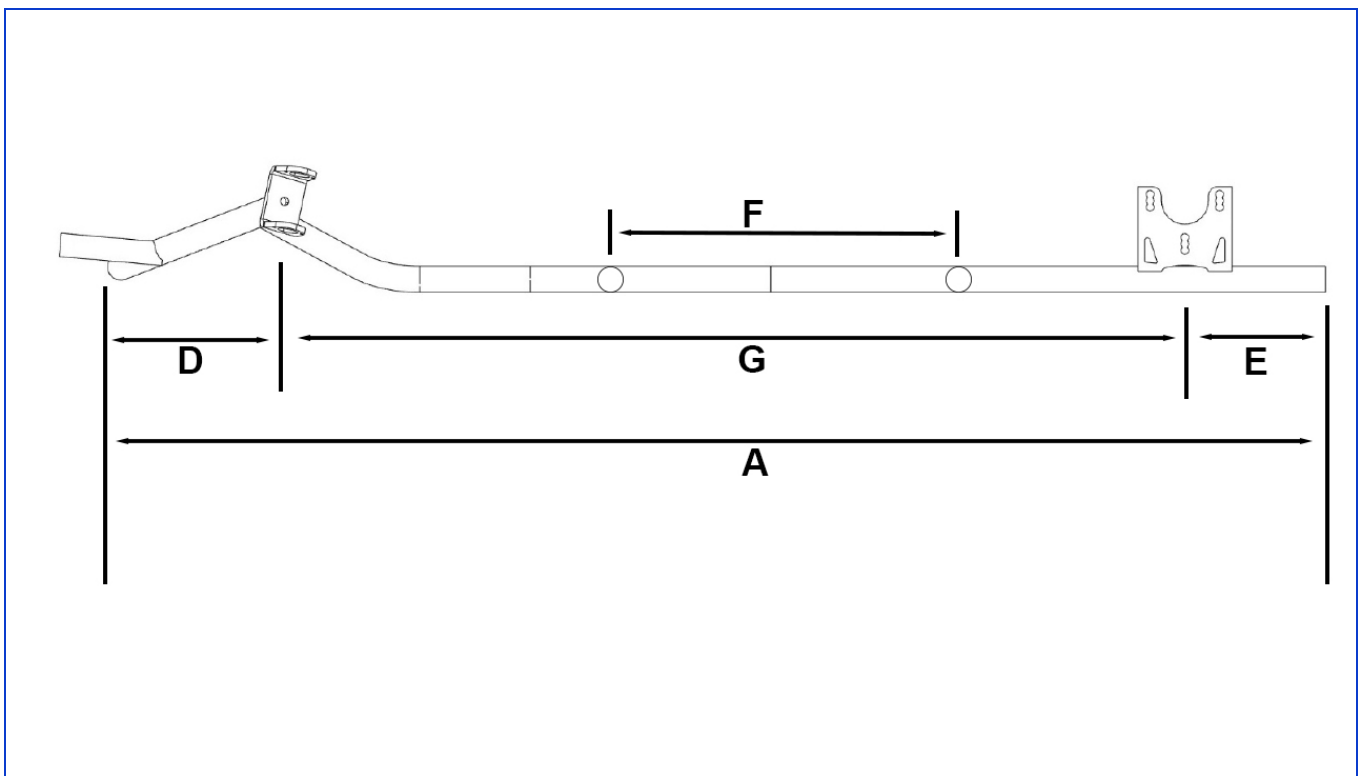
Plan view photograph of complete chassis, without bumpers, brake, bodywork, seat and wheels

### Signature and stamp of Motorsport UK

	Date: <b>Date</b> Signed by: <b>Name</b> Position: <b>Position</b>
--	--

**Technical drawings of chassis with main dimensions**

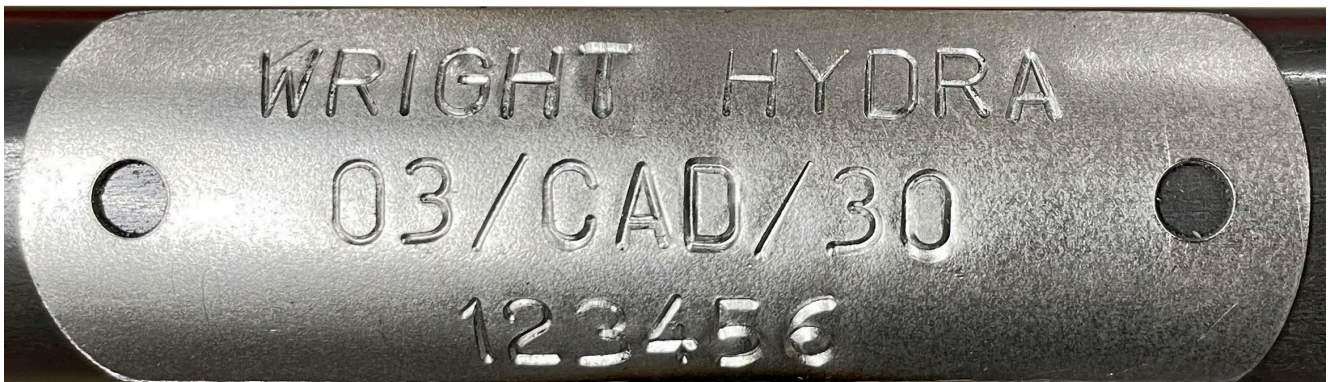
Plan view of chassis frame (with labels referring to Table 1)



Side view of chassis (with labels referring to Table 1)

**Table 1 – Dimensions of frame**

		Measurement	Tolerance / Remark
A	Overall length	1336 mm	± 15 mm (without front bumper)
B	Outer front width	662 mm	± 10 mm
C	Outer rear width	606 mm	± 10 mm
D	Front overhang	235 mm	± 5 mm
E	Rear overhang	155 mm	± 15 mm
F	Side bumper mounting points	380 mm	± 5 mm
G	Wheelbase	950 mm	± 5 mm
H	Number of main tubes	6	with Ø 28 mm
I	Number of bends in the main tubes	8	-
J	Tube diameter	28 mm	± 0.7 mm
K	Wall thickness	2 mm	+ 0.2 mm / - 0.1 mm

**Identity plate**


Photograph / drawing of ID plate

**Additional information**

Mirror image Honda Cadet variant permitted