

## HOMOLOGATION OF KART ENGINE

Category	Bambino
Manufacturer	Comer SpA
Model	C50
Valid From	18 November 2013
Number of pages	9

*This Homologation Form reproduces descriptions, illustrations and dimensions of the engine at the moment of the MSA Homologation. This document may be supplemented by official amendment. This document must be read in conjunction with the appropriate Class Regulations.*



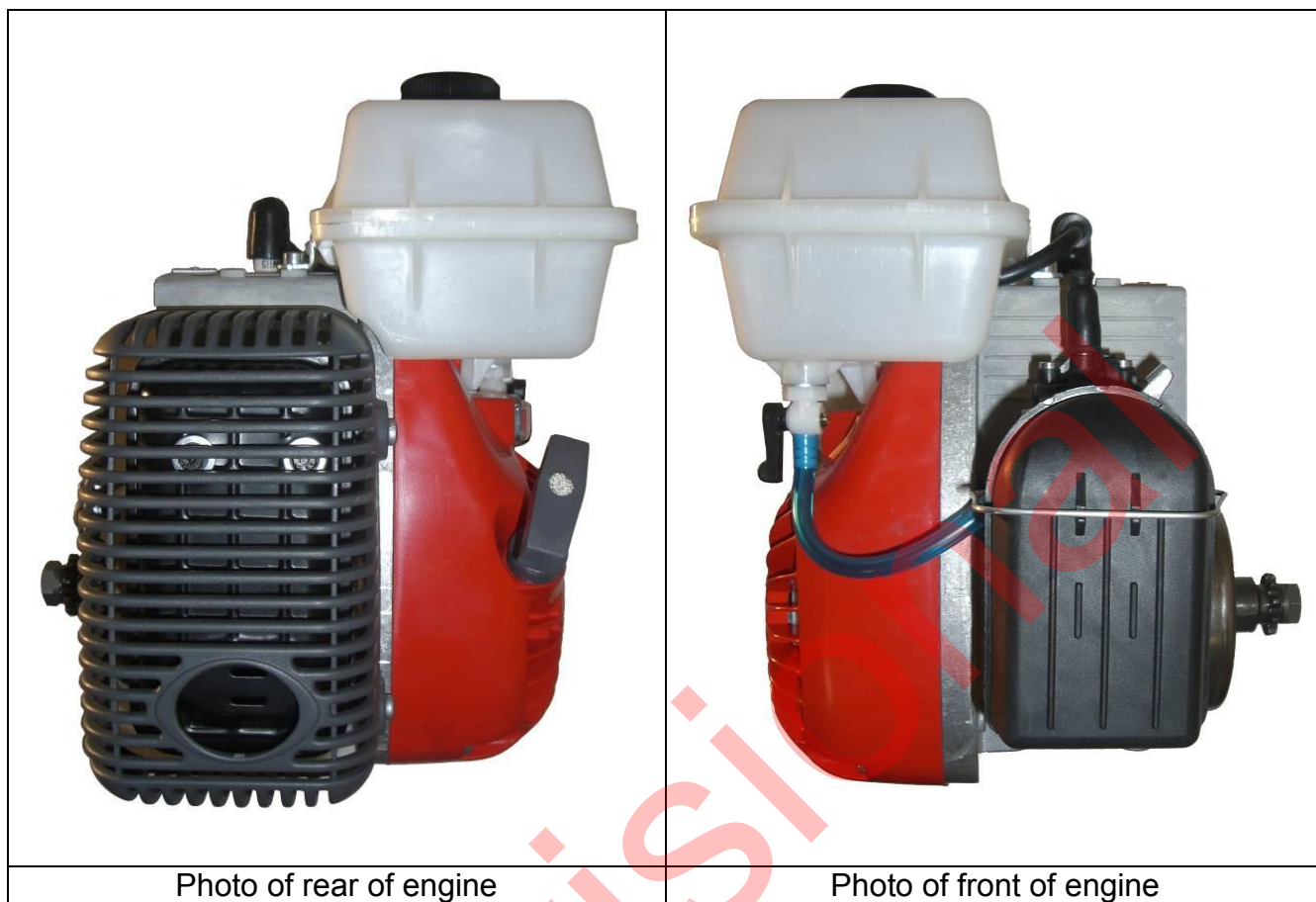
Photo of drive side of engine

Photo of opposite side of engine

## SIGNATURE AND STAMP OF THE MSA

Date: **25 November 2013**Signed by: **Joe Hickerton**Position: **MSA Technical Administrator**

*Any reproduction must be authorised by the MSA*



**LIST OF APPENDICES**

No.	Type	Description	Pg No.	Date
1				

Last updated: 25 November 2013

Provisional

## TECHNICAL FICHE

Trademark

**Comer**Type: *C 50*

Manufacturer: COMER SpA

42011 Bagnolo in Piano (RE)  
ITALY

## TECHNICAL INFORMATION

BORE/ 40 mm

Fuel

*-Mix 4%*

STROKE/ 38 mm

Ignition

*-Electronic*

DISPLACEMENT/ 48 cc.

Spark plug

*-Short Thread*

Locking devices and fixtures may  
be replaced with NON original  
parts

Clutch

*-Centrifugal 3 pieces*

Sproket

*-Z 10*

Carburettor

*-DELL'ORTO SHA -14-12L*

Cylinder

*-Alluminium/Nicasil or chromed*

**CYLINDER**COMBUSTION CHAMBER: 7,1 cm<sup>3</sup> minimum

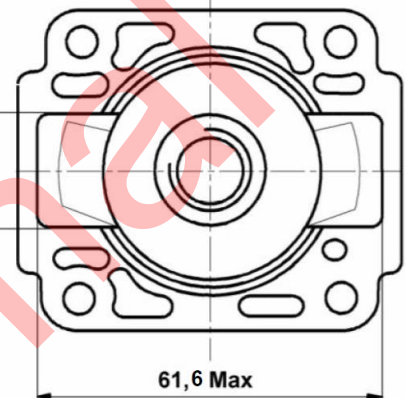
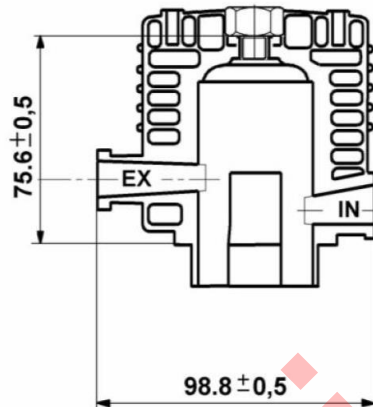
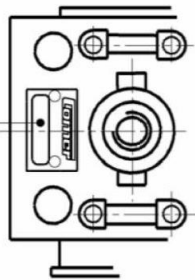
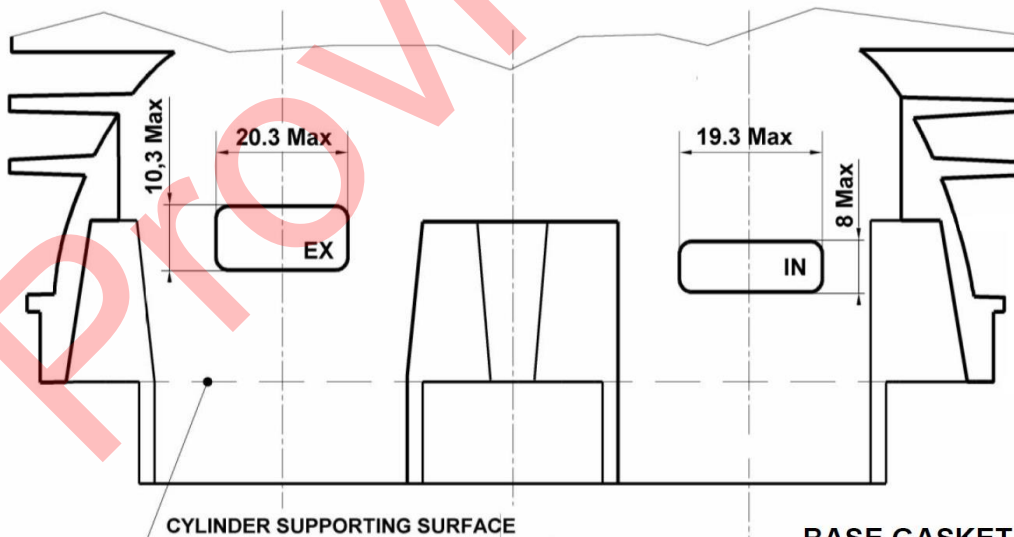
Measured with W60 head volume adaptor measured with digital burette.

COMBUSTION CHAMBER: 7.4 cm<sup>3</sup> minimum

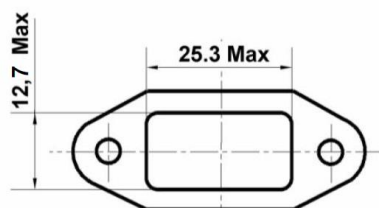
Measured with glass burette and W60 volume adapter.

CYLINDER FLANGE

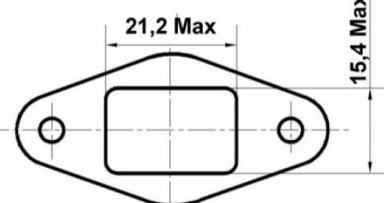
PROGRESSIVE NUMBER STAMP

**CYLINDER DIAGRAM**MEASURED WITH FEELER GAUGE WIDTH  
8 mm THICKNESS 0.2 mmINTAKE  
EXHAUST: 128° Max  
: 140° Max

CYLINDER SUPPORTING SURFACE

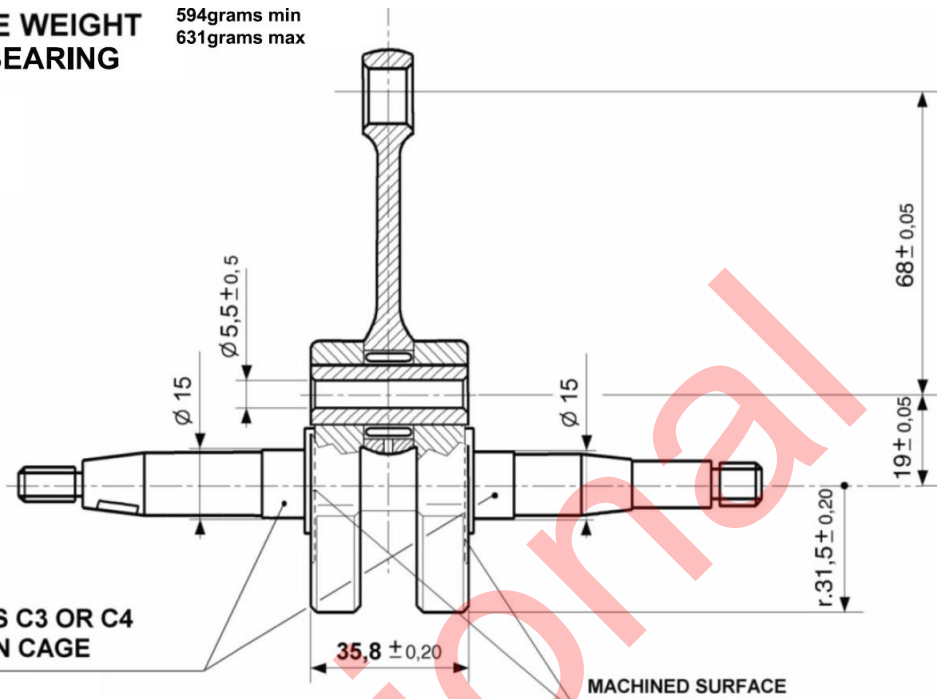
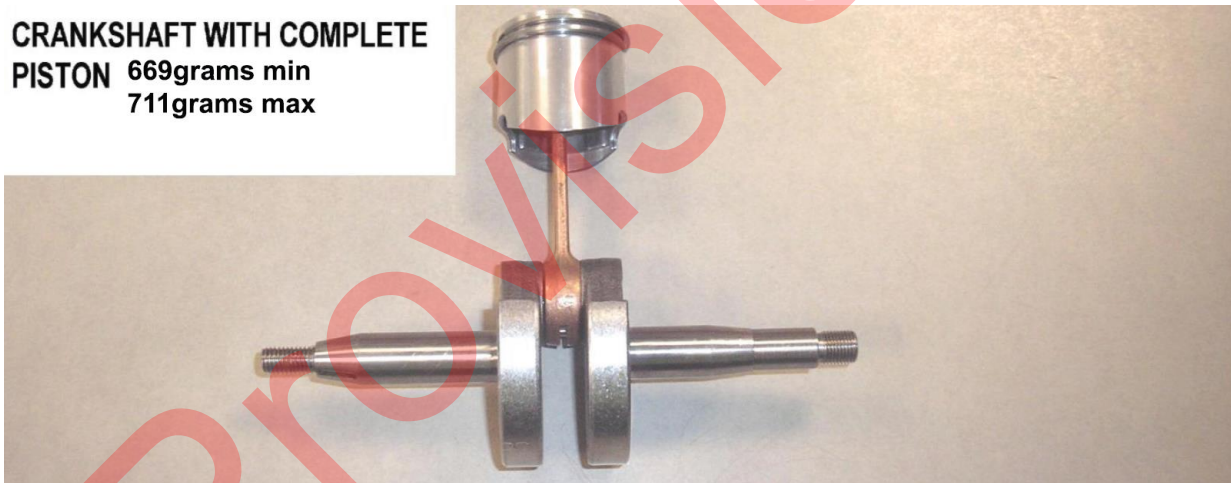
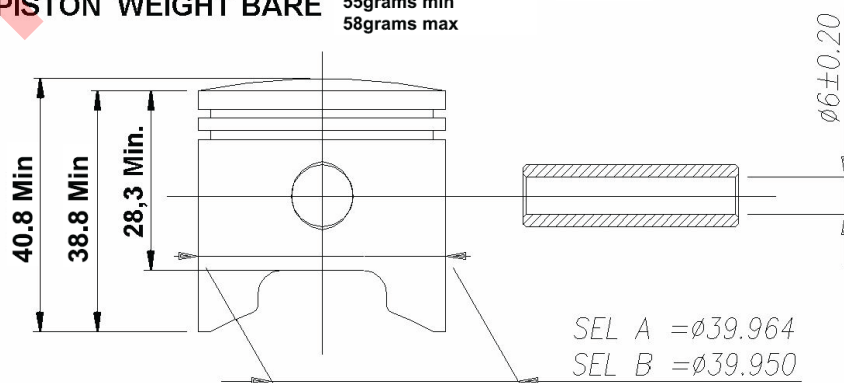
BASE GASKET  
THICKNESS - FREE

EXHAUST CYLINDER FLANGE



INTAKE CYLINDER FLANGE



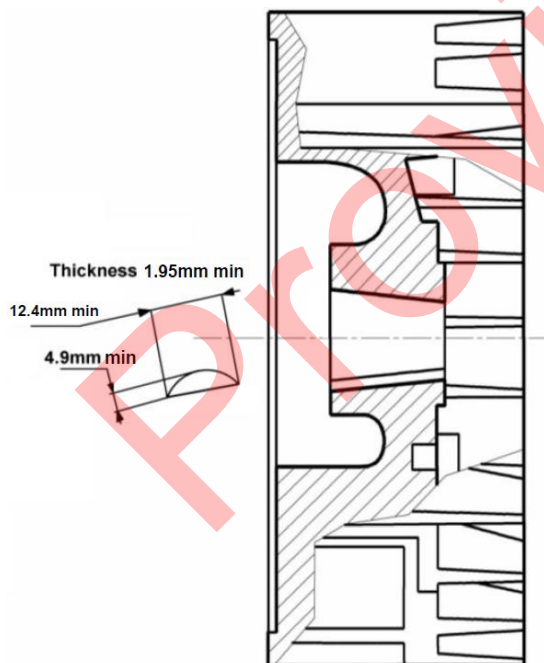
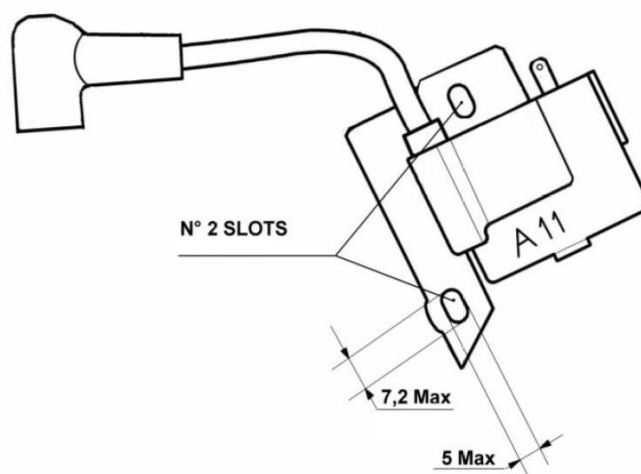
**COMPLETE CRANKSHAFT****CRANKSHAFT BARE WEIGHT  
WITH SMALL END BEARING**594grams min  
631grams maxORIGINAL OIL SEALS  
MARKED "COMER"BEARINGS C3 OR C4  
WITH IRON CAGE**CRANKSHAFT WITH COMPLETE  
PISTON** 669grams min  
711grams max**PISTON****PISTON WEIGHT BARE**55grams min  
58grams max**N° 2 Piston rings  $1,48 \pm 0,02$**

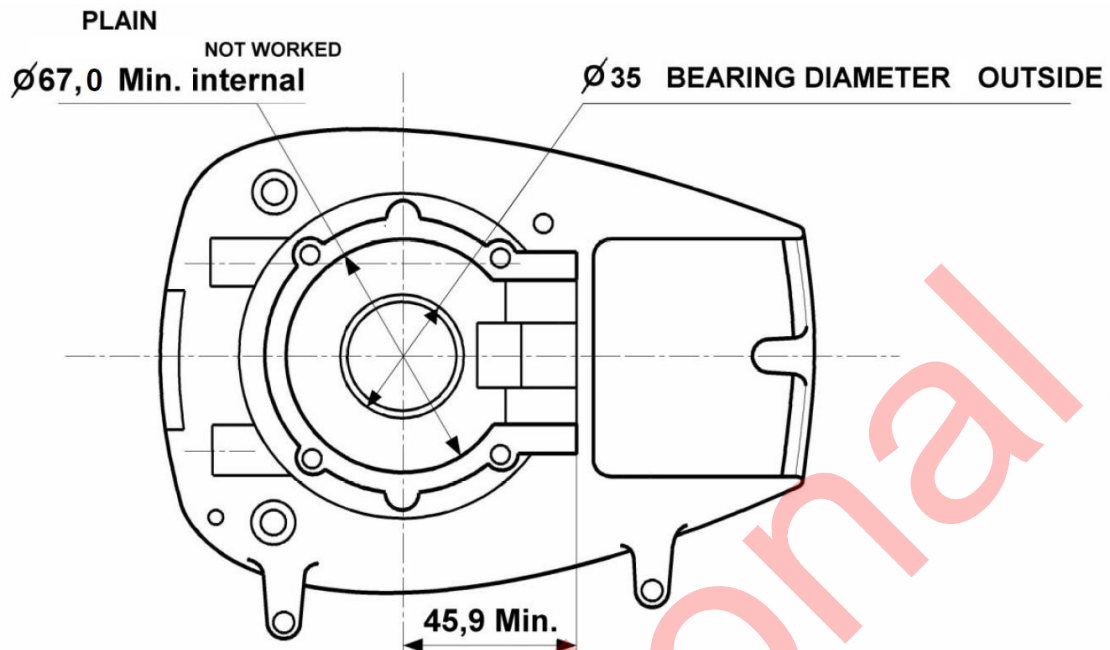
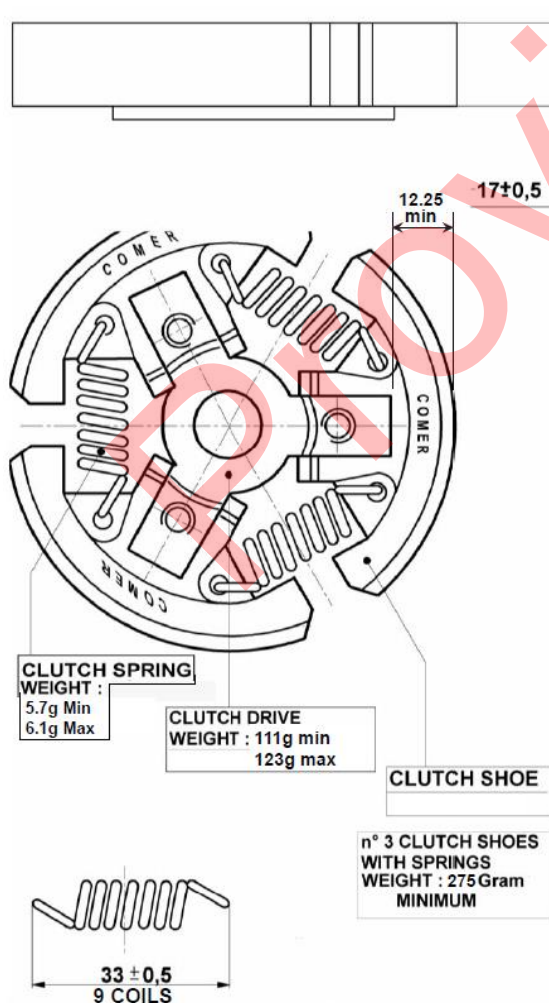
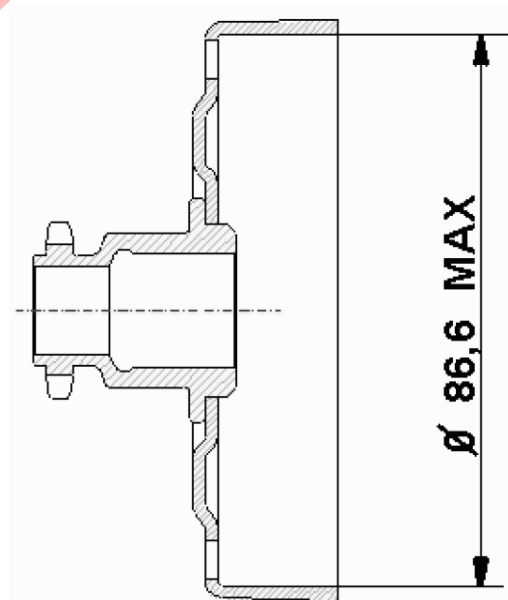
**IGNITION****FLYWHEEL**  
**FJ MODEL**

Code FJ 20-07

**COIL**  
**FJ MODEL A11**

Code FJ A11 20-07

**Weight=** 378 min  
without key 402 max**SPARE PART CODE: C050-453-02****SPARE PART CODE: C050-425-02****SPARK PLUGS – CHAMPION RCJ7Y BOSCH WS5F OR WSR7F**

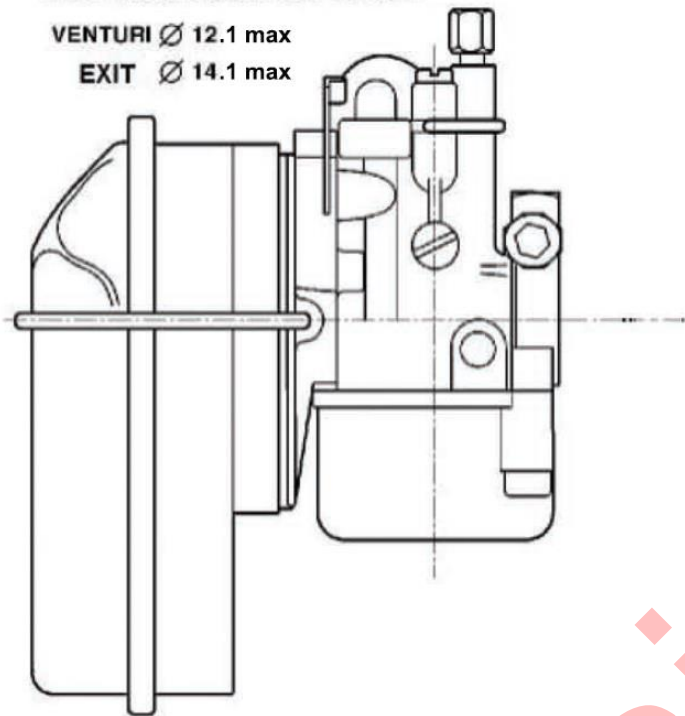
**CRANKCASE****CLUTCH****SPROCKET**

SPROCKET "COMER" 10 TEETH PITCH 219



**CARBURETTOR**

DELL' ORTO SHA 14-12L ORIGINAL

VENTURI  $\varnothing$  12.1 maxEXIT  $\varnothing$  14.1 max

Emulsion Tube ID 1.75 max

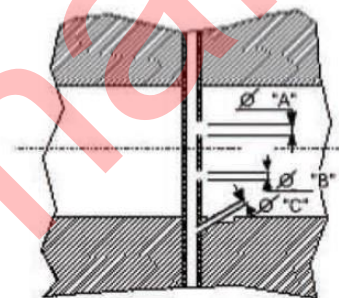
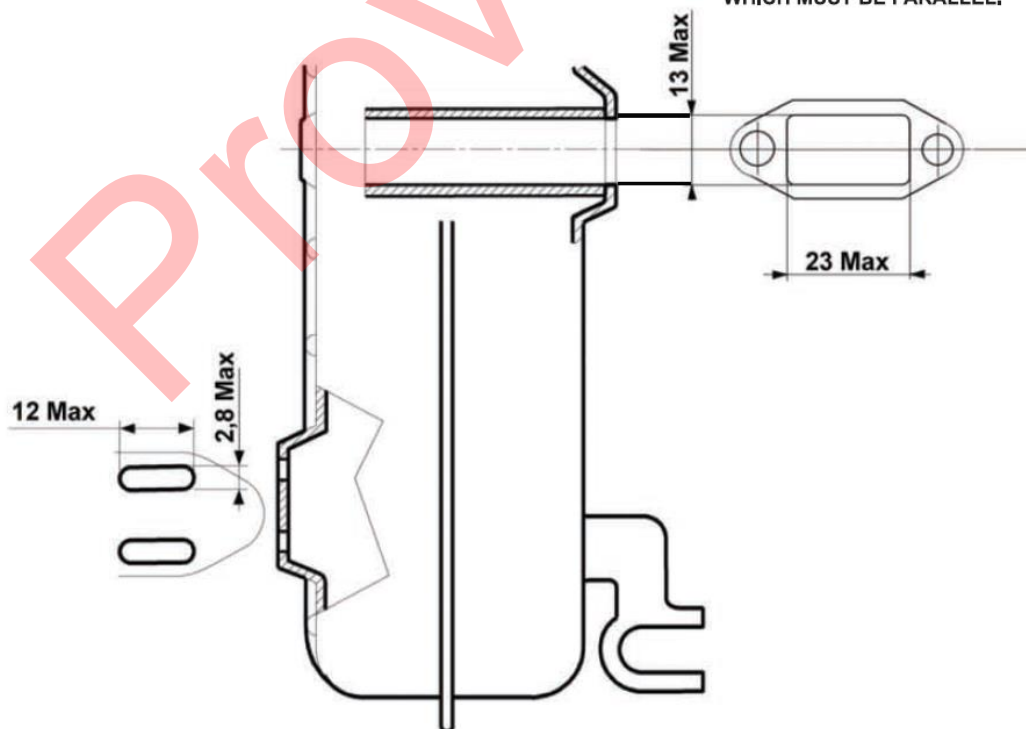
Slide No:7 (6108)

Float 3.5gr

Needle Seat ID 1.5max

Main Jet FREE

$\varnothing$  "A" = 1,25 mm  
 $\varnothing$  "B" = 0,80 mm  
 $\varnothing$  "C" = 0,80 mm

**AIR BOX WITH 1 FILTER MIN****VERIFY CARBURETTOR NOZZLE  
WITH NO GO GAUGE****MUFFLER**MEASUREMENTS RELATE TO INNER SECTION  
WHICH MUST BE PARALLEL.**END**